



Come apart and rest awhile.

(Mk 6:31)

An opportunity to look inward and upward...

Discover this truth once more at the IHM Spirituality Center situated across from the Immaculate University campus in the heart of Chester County.



Rest in God or walk in friendship.

Meet the need for *anytime retreats*:

Come alone or with a group.

Stay a day or overnight.

Arrange a day, a weekend, or a week.

Reunions

Conferences

Faculties

(Day or Twilight)

Experience the peace, the quiet...



As Sisters, Servants of the Immaculate Heart of Mary, we extend joyful service and hospitality as we welcome all persons seeking deeper union with the God who saves and sets us free.

—from the Mission Statement of the IHM Spirituality Center

Retreat...

—for *moments* of decision

—for *light* to see what might be

—for *solitude* and *Sabbath*

Retreat offers grace-filled space to suit your needs.

Acres of woods, fields, and walking paths invite the retreatant to explore the peace and tranquility that God's nature offers.



**Directions to
Villa Maria House of Studies**

From Lancaster Pike (Route 30)

Travel east or west to Route 352. Follow Route 352 south 1 mile to King Road. Turn right onto King Road for 1 mile. The entrance to Villa Maria House of Studies is on the left.

From West Chester Pike (Route 3)

Travel east or west to Route 352. Follow Route 352 north to King Road. Turn left onto King Road for 1 mile. The entrance to Villa Maria House of Studies is on the left.

From Philadelphia

Travel Schuylkill Expressway (Route I-76) west to Route 202 south to Malvern, exit at Route 29. Follow Route 29 south to Route 30. Follow Route 30 west to Route 352.

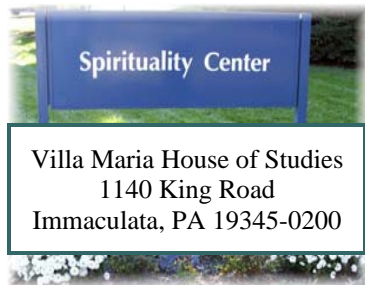
**Follow 352 south to King Road. Turn right onto King Road for about 1 mile. The entrance to Villa Maria House of Studies is on the left.

From The Pennsylvania Turnpike—East

Travel to Valley Forge Exit #326/24. Follow Route 202 south to Malvern, exit at Route 29. Follow Route 29 south to Route 30. Follow Route 30 west to Route 352. Follow Route 352 south as above **.

From The Pennsylvania Turnpike- West

Travel to Downingtown Exit #312/23. Follow Route 100 south to Route 30. Follow Route 30 east to Route 352. Follow Route 352 south as above **.



What you will find here...



The **Center** welcomes people of all faith denominations, spiritualities, and prayer groups, as well as persons of all ethnic and racial backgrounds

Gatherings up to 100 persons may use the facilities for a day or evening. Special programs and retreats are scheduled throughout the year and are held during the day, evening, or on weekends.

Fees designated by the **IHM Spirituality Center** allow us to maintain our facilities and programs. Contributions are accepted with gratitude.

For brochures or other information, contact the Center during office hours at

610-647-4136

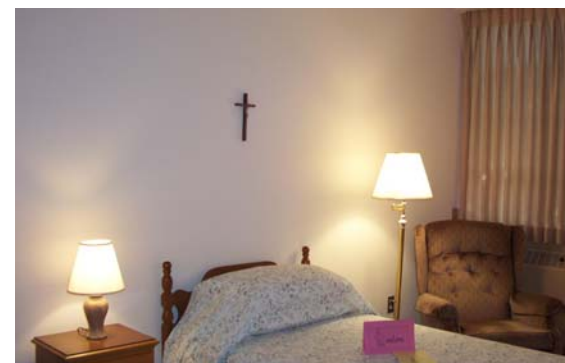
FAX 610-648-0764

E-mail us at sihmspc@hotmail.com

www.ihmimmaculata.org

The Center offers facilities such as:

- + 35+ single bedrooms on two separate floors
- + Showers, kitchenettes and laundry facilities on each floor
- + A large presentation area with multi-media capacities
- + Meeting, conference, and informal gathering rooms
- + Dining areas
- + Private rooms for meditation, spiritual direction, confession or counseling
- + Internet access
- + An elevator and handicap accessible entrance



IHM Spirituality Center

